

livesound

portablesound

installedsound

# IMPACT 55T

compact passive 2-way loudspeaker

## Features

- Compact gas-filled injection-moulded enclosure
- Wall bracket with integral electrical connections
- Paintable enclosure
- OmniMount™ compatible
- Passive crossover

## Applications

- Cafés and bars
- Restaurants
- Retail shops
- Sports and leisure
- Discotheques and clubs
- Themed environments
- Houses of Worship

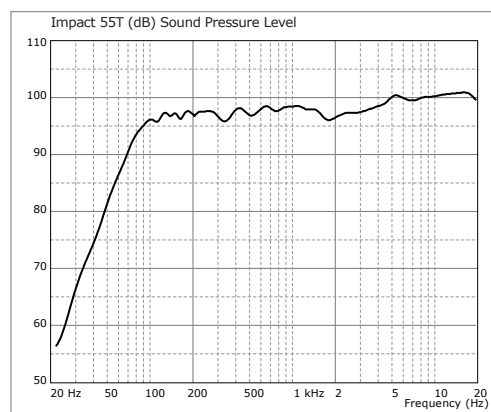


**The Impact 55T is a compact passive two-way loudspeaker consisting of a 5" low frequency drive unit matched to a 1" neodymium ferrofluid cooled HF tweeter with an internal passive crossover network and including an internal line transformer.**

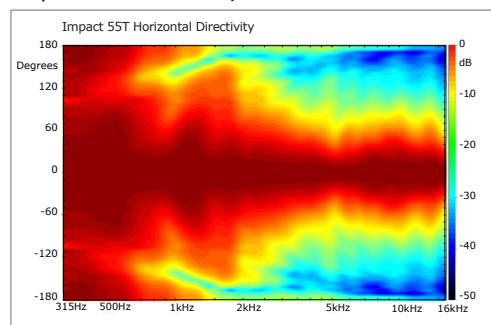
The Impact 55T will provide high quality sound reproduction from an unobtrusive cabinet and is available in black or white, designed to blend effectively into any decor. It is supplied with a multi-tapped internal line transformer for use in 70 volt line and 100 volt line distributed systems, and also includes a low impedance setting. The low frequency range of the Impact 55T can easily be extended with the TSB-110 subwoofer. The Impact 55T is supplied with an adjustable wall mounting bracket which provides the loudspeaker connections as an integral part of the bracket assembly, allowing the brackets to be sited, installed and wired independently of the loudspeakers being available on-site, making the final installation and commissioning of the loudspeaker system a greatly simplified process. The cabinet also provides M6 fixings for use with CB-10 wall brackets, WB-10 ceiling brackets and OmniMount™ brackets. A 3/8" threaded insert is provided behind an EPDM rubber cover on the bottom of the cabinet for use with microphone stands as a spot monitor.

## Impact series

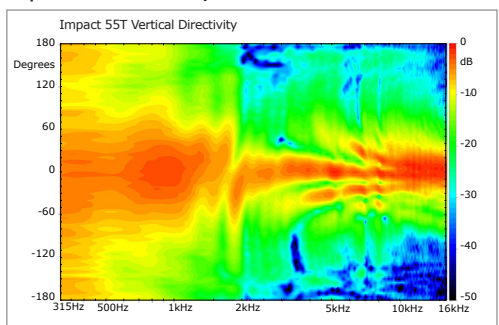
### Frequency Response



### Impact 55T Horizontal Directivity



### Impact 55T Vertical Directivity



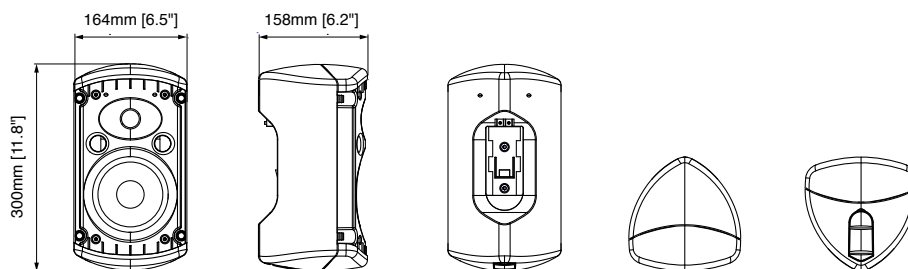
**TURBOSOUND Ltd**  
Star Road  
Partridge Green  
West Sussex  
RH13 8RY  
United Kingdom

t: +44 (0)1403 711447  
f: +44 (0)1403 710155  
e: [techsupport@turbosound.com](mailto:techsupport@turbosound.com)  
w: [www.turbosound.com](http://www.turbosound.com)

# IMPACT 55T

 compact passive 2-way loudspeaker

<b>DIMENSIONS (HxWxD)</b>	300mm x 164mm x 158mm (11.8" x 6.5" x 6.2")
<b>NET WEIGHT</b>	3.5kg (7.7lbs)
<b>COMPONENTS</b>	1 x 5" (127mm) LF driver, 1 x 1" (25mm) ferrofluid-cooled neodymium HF tweeter
<b>FREQUENCY RESPONSE</b>	89Hz – 20kHz ±3dB, 64Hz – 20kHz ±10dB
<b>NOMINAL DISPERSION</b>	100°H x 70°V @ -6dB points
<b>POWER HANDLING</b>	80 watts continuous, 160 watts program
<b>SENSITIVITY</b>	90dB SPL, 1 watt @ 1metre
<b>MAXIMUM SPL</b>	109dB continuous, 115dB peak
<b>IMPEDANCE</b>	16 ohms
<b>LINE TRANSFORMER</b>	Transformer taps at 60 watts, 30 watts, 15 watts (100v line); 60 watts, 30 watts, 15 watts, 7.5 watts (70v line), and low impedance setting
<b>CROSSOVER</b>	Internal passive crossover at 2.5kHz, 12dB/octave
<b>CONSTRUCTION</b>	Gas injected, glass filled moulded ABS enclosure
<b>GRILLE</b>	Powder-coated galvanised perforated steel
<b>MOUNTING</b>	(2) M6 fixing points for WB-5 wall bracket (supplied). Compatible with Turbosound WB-10 wall brackets and CB-10 ceiling brackets, and OmniMount™ brackets
<b>CONNECTORTS</b>	Colour coded binding posts
<b>STANDARDS</b>	Fire retardant V0 ABS
<b>OPTIONS</b>	Available colours: White, Black
<b>SPARES AND ACCESSORIES</b>	<div> <div>LS-50</div> <div>LF driver</div> </div> <div> <div>TW-52</div> <div>HF tweeter</div> </div> <div> <div>MG-IMP55</div> <div>Metal grille, black or white</div> </div> <div> <div>WB-5</div> <div>Adjustable wall bracket</div> </div> <div> <div>WB-10</div> <div>Wall bracket</div> </div> <div> <div>CB-10</div> <div>Ceiling bracket</div> </div>
<b>MORE INFO</b>	More information can be found on our website: <a href="http://www.turbosound.com">www.turbosound.com</a>



## Limited Warranty

Every Turbosound loudspeaker product is warranted to the original end-user purchaser and all subsequent owners for a period of two (2) years for loudspeaker products, or one (1) year for electronics products, from the original date of purchase. Warranty coverage includes defects in materials and workmanship. It does not include:

- damage caused by accident, misuse, abuse, neglect or modification by any other person other than an authorised Turbosound representative,
- damage caused by overdriving, use with unsuitable amplifiers or amplifier failure,
- damage caused by failure to operate the product in accordance with the instructions contained in the user's manual,
- damage occurring during shipment in transit,
- claims based upon any misrepresentations by the seller,
- products which do not have the original components as specified in the product engineering information,
- products on which the serial number has been removed or defaced.

Should any fault develop with a component of your Turbosound system, please return the product, freight pre-paid, in its original packing carton, along with proof of purchase such as the original bill of sale, and a description of the suspected fault, to your local authorised Turbosound representative. The product serial number must be quoted in all correspondence relating to the claim. Insurance is recommended as Turbosound or its representatives are not liable for loss or damage in transit.